



# SOUTH WASHINGTON WATERSHED DISTRICT GLACIAL VALLEY INTERPRETIVE AREA

FINAL February 23, 2018



# SITE CHARACTER

BUILDING SITE AND VIEW

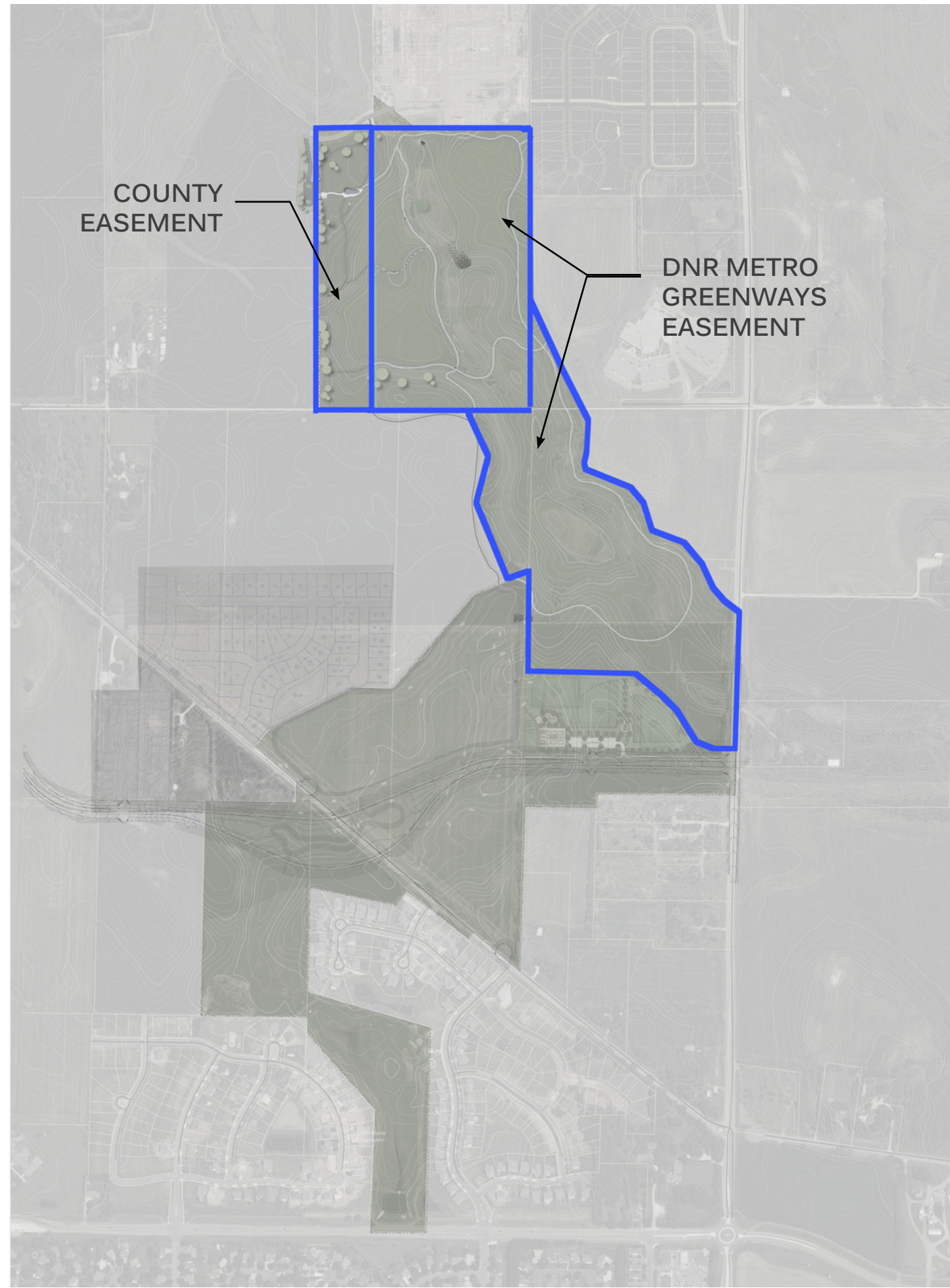




# CONTEXT

**“This is a learning site.** This protected natural landscape at the center of existing and future development will tell multiple histories and explain current ecologies and its primary role as a piece of green infrastructure. The stories that are told on the site should be communicated in a variety of ways in order that visitors of different ages, backgrounds, group size and ability level can experience the layered meanings inherent to the site. The structure should offer 3-season comfort and a unique architectural expression, clearly identifying it as a regional attraction rather than a neighborhood park.”

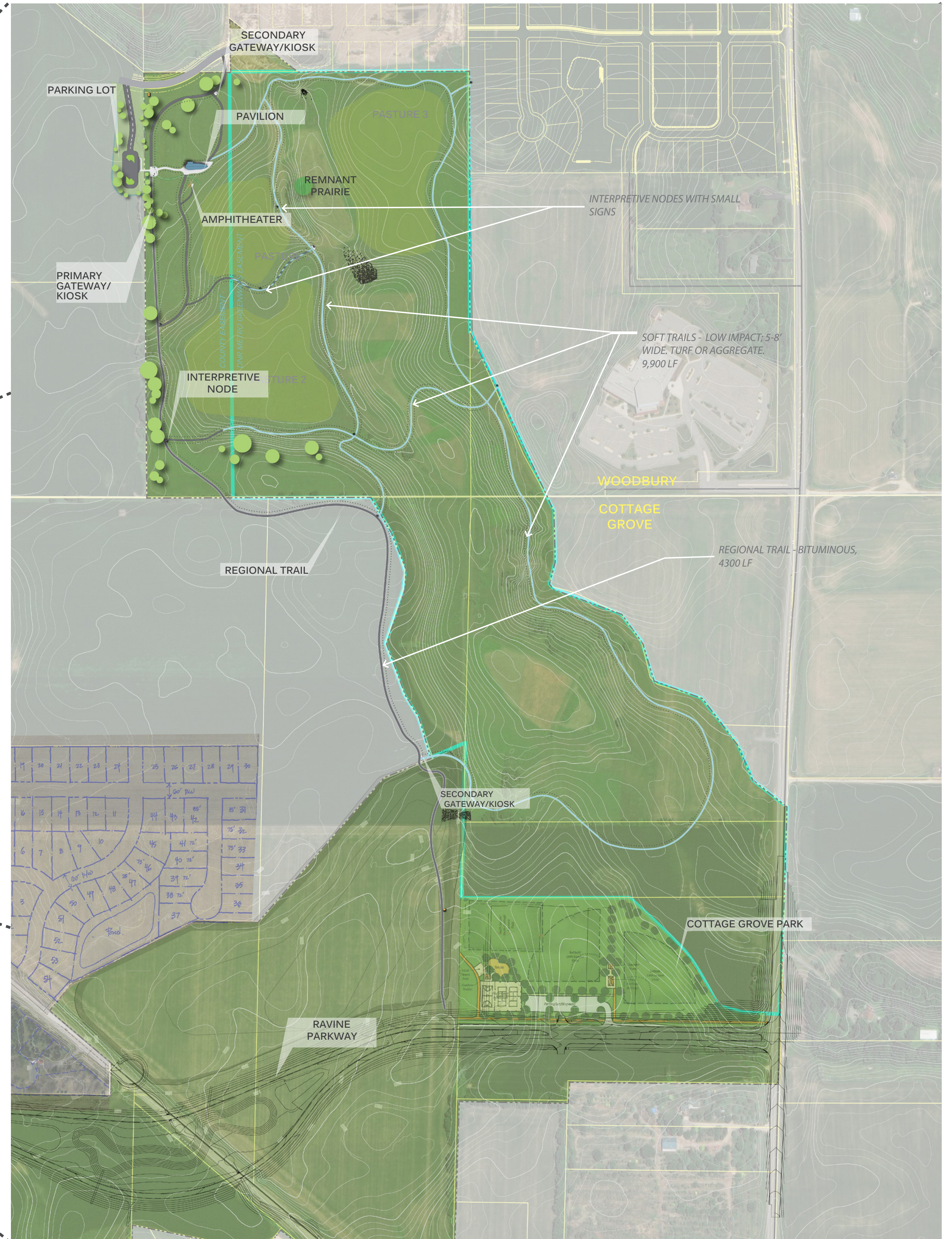
- VISION FROM CONCEPT PLANNING, 2017



EASEMENT AREAS



CONTEXT MAP





# PROGRAM ELEMENTS

## PROGRAMMING

### SITE

- Parking - outside SWWD property boundaries
- Grazing for restoration
- Interpretation
  - ◊ Signs
  - ◊ Demonstration (prairie, paddocks, farming, water)
  - ◊ Stormwater/Green Infrastructure
  - ◊ Rotating displays
- Bee-keeping
- Trailhead
  - ◊ Double as gateways
  - ◊ Two by structure, one by Cottage Grove park
- Hiking/walking.
  - ◊ Trails will be concrete, grass and/or gravel
  - ◊ Select destinations in prairie to be accessible
- Biking (regional trail)
  - ◊ Bituminous
- Nature Play - modest and concentrated. Combine into trail between parking and structure.

### BUILDING

- Shelter
- Gathering for 30 comfortably seated. 60 standing.
- Informal classroom (5-130)
- Trail head
- Interpretation

### PROGRAMMING PARTNERS

- Refuge Friends, Inc
- Washington Conservation District
- Dodge Nature Center
- Washington County Parks
- City of Woodbury Parks
- DNR
- City of Cottage Grove

## INTERPRETATION THEMES

- Resiliency/Green Infrastructure: infiltration capacity
- Glacial: Bedrock valley full of sand
- Farming legacy
- Native people
- Edible plants
- Native plants
- Land use/Landcover
- Military Road
- Water Quality and Designed Flooding: HWL is 906
- Ongoing research: pollinators, haying, grazing
- Pollution

## PRECEDENTS

### ARRIVAL



GATEWAY/MONUMENT SIGN



PARKING LOT



SIMPLE, VERTICAL

### INTERPRETATION



LOW, INTEGRATED SIGNAGE



CLEAR STATEMENTS



ARTFUL AND INTERACTIVE



TALL, MINIMAL

### TRAILS



8' WIDE BITUMINOUS



SOFT TRAILS

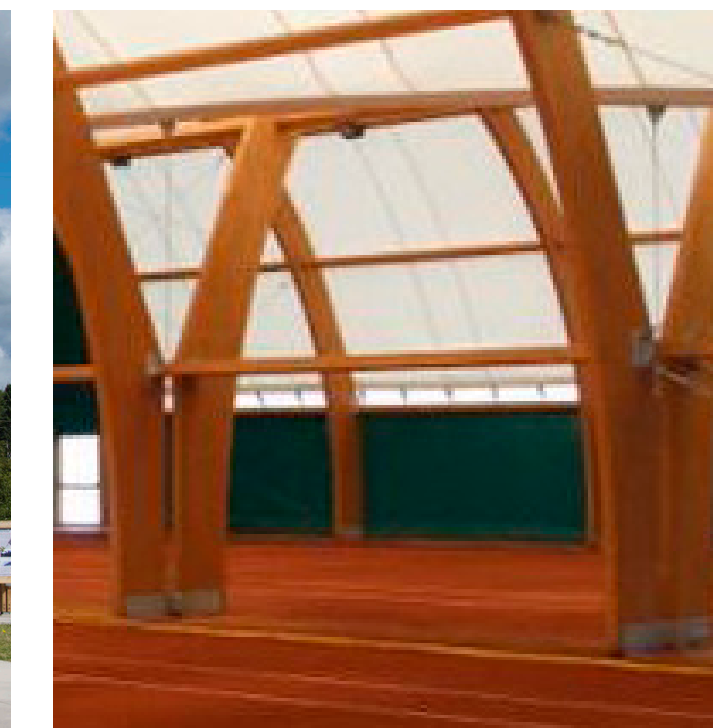


NATURE PLAY

### STRUCTURE



CONCRETE AND METAL



TENSILE AND TIMBER



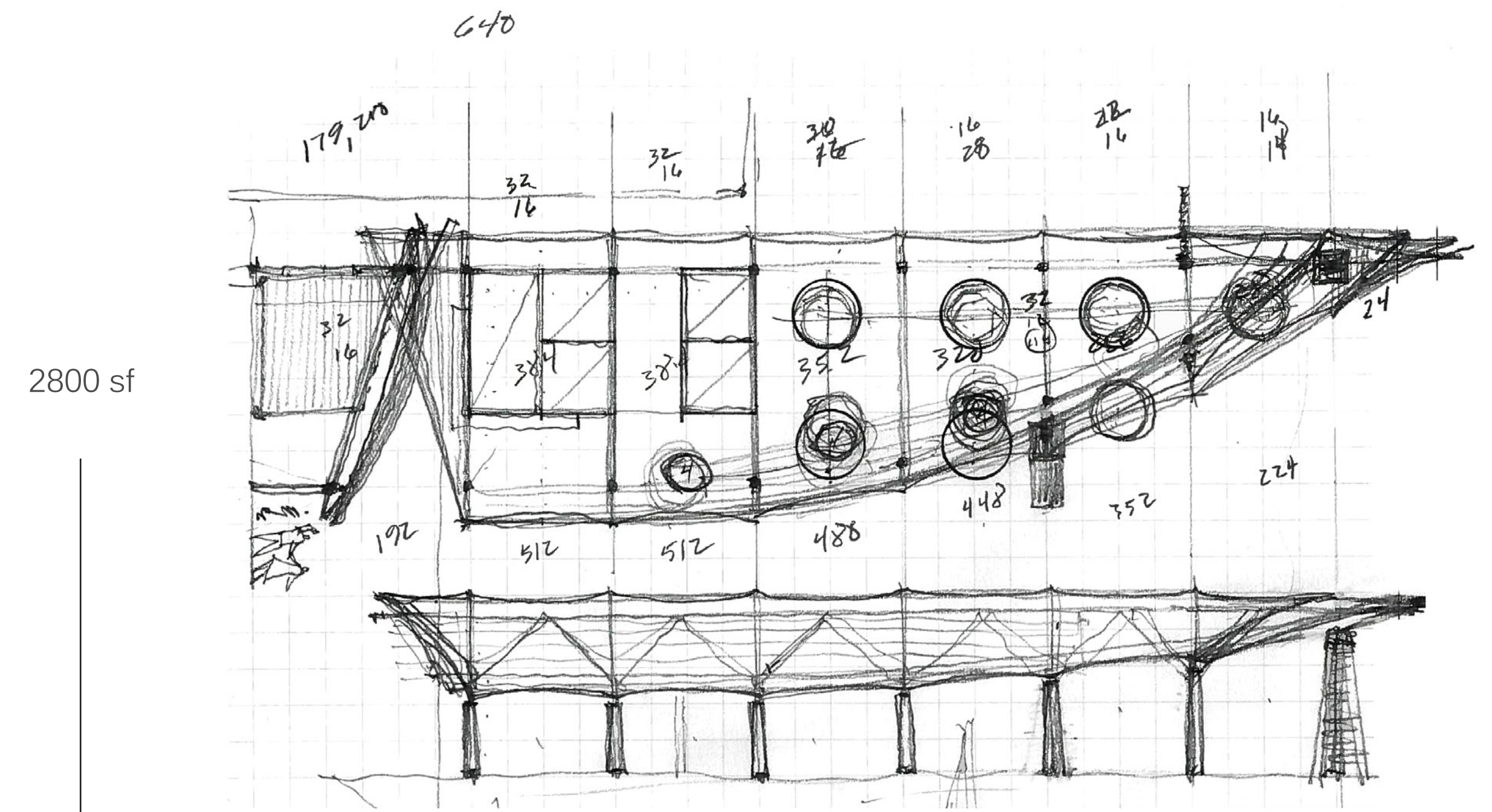
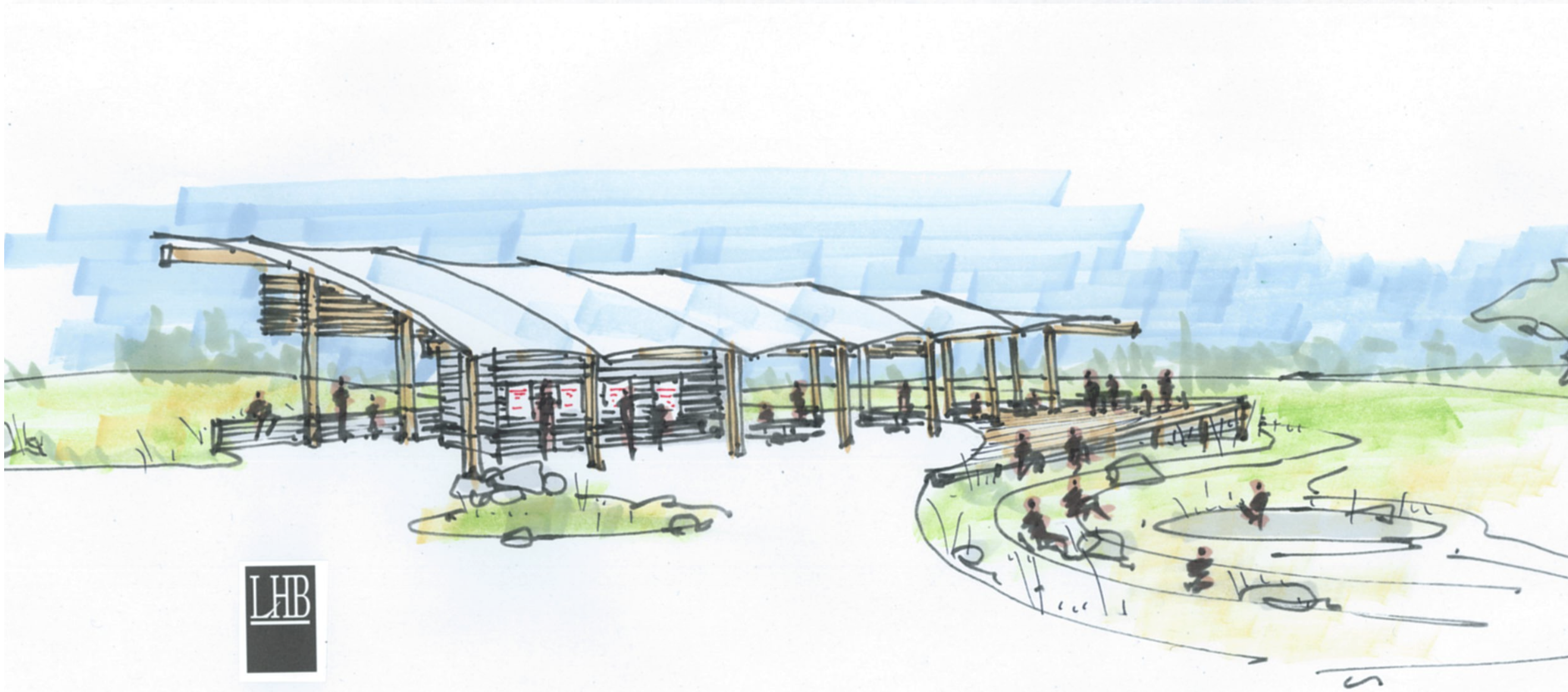
LATH AND TIMBER



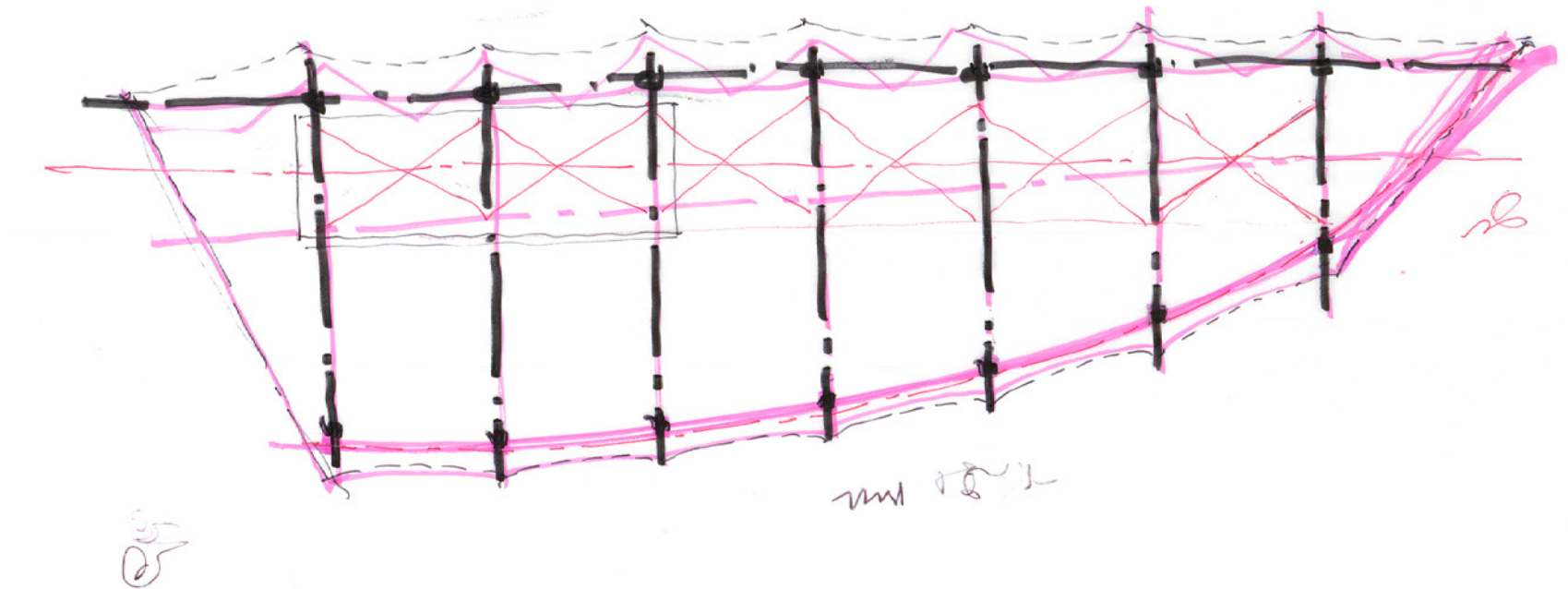
# CONCEPT EVOLUTION

## SCALING THE PAVILION TO FIT THE PROGRAM

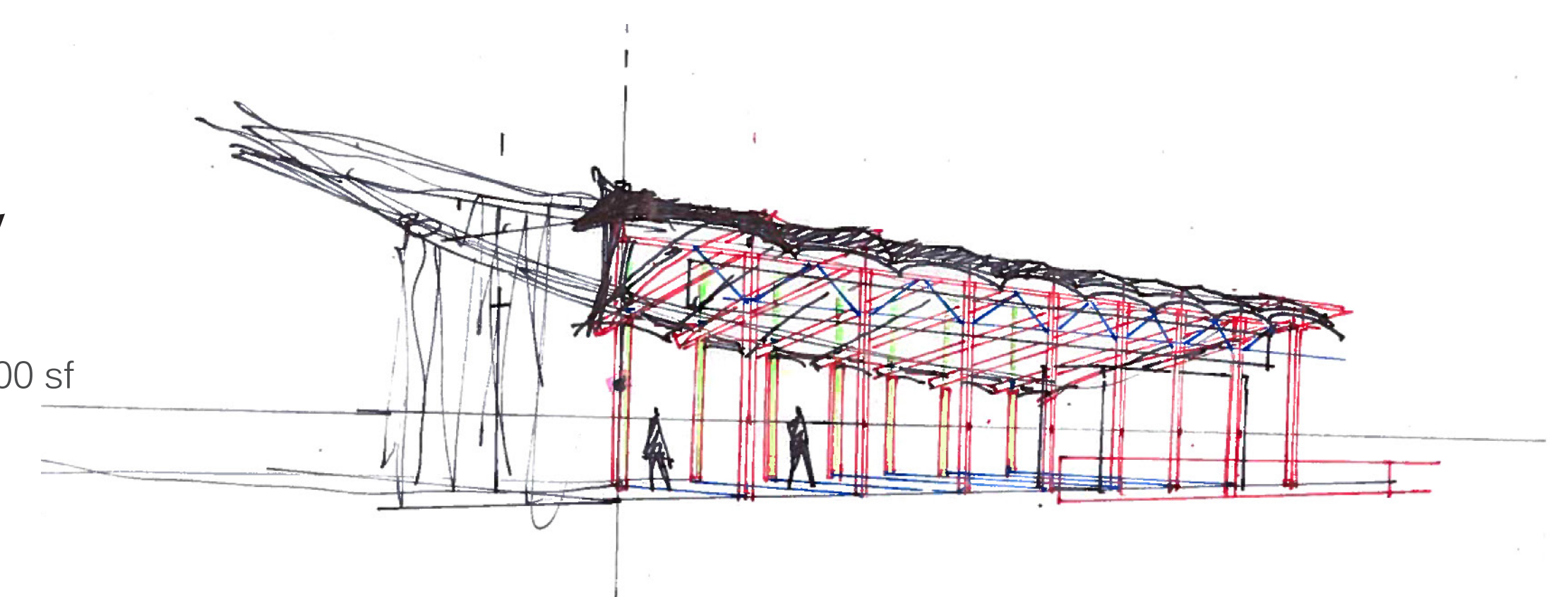
- STARTED AT 3600 SF
- METAL ROOF TRANSITIONS TO TENSILE
- AS FOOTPRINT GETS SMALLER TENSILE NO LONGER FEASIBLE
- WING TRANSITIONS TO "LEAF" CONCEPT - ARCHING ROOF LINE IN ELEVATION AND RETURN TO METAL ROOF



2200 sf



1600 sf



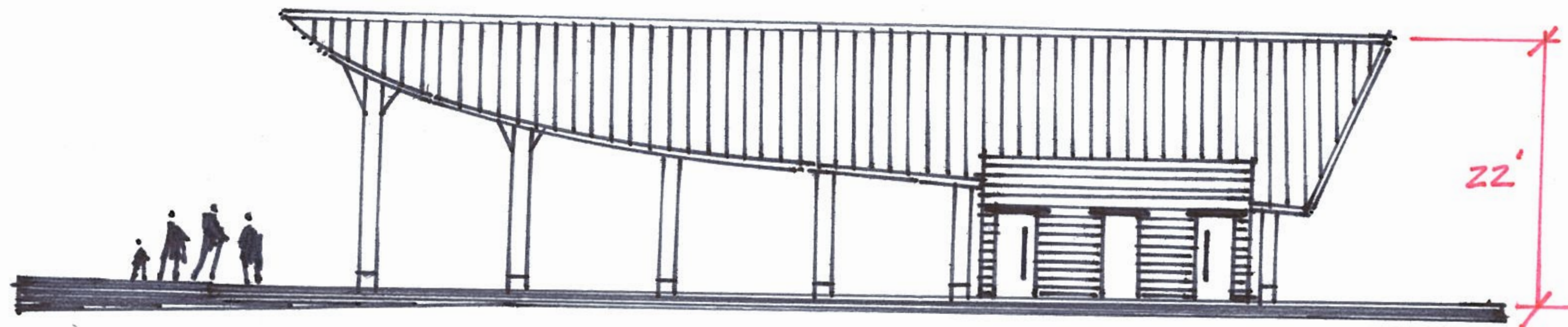


# LEAF CONCEPT

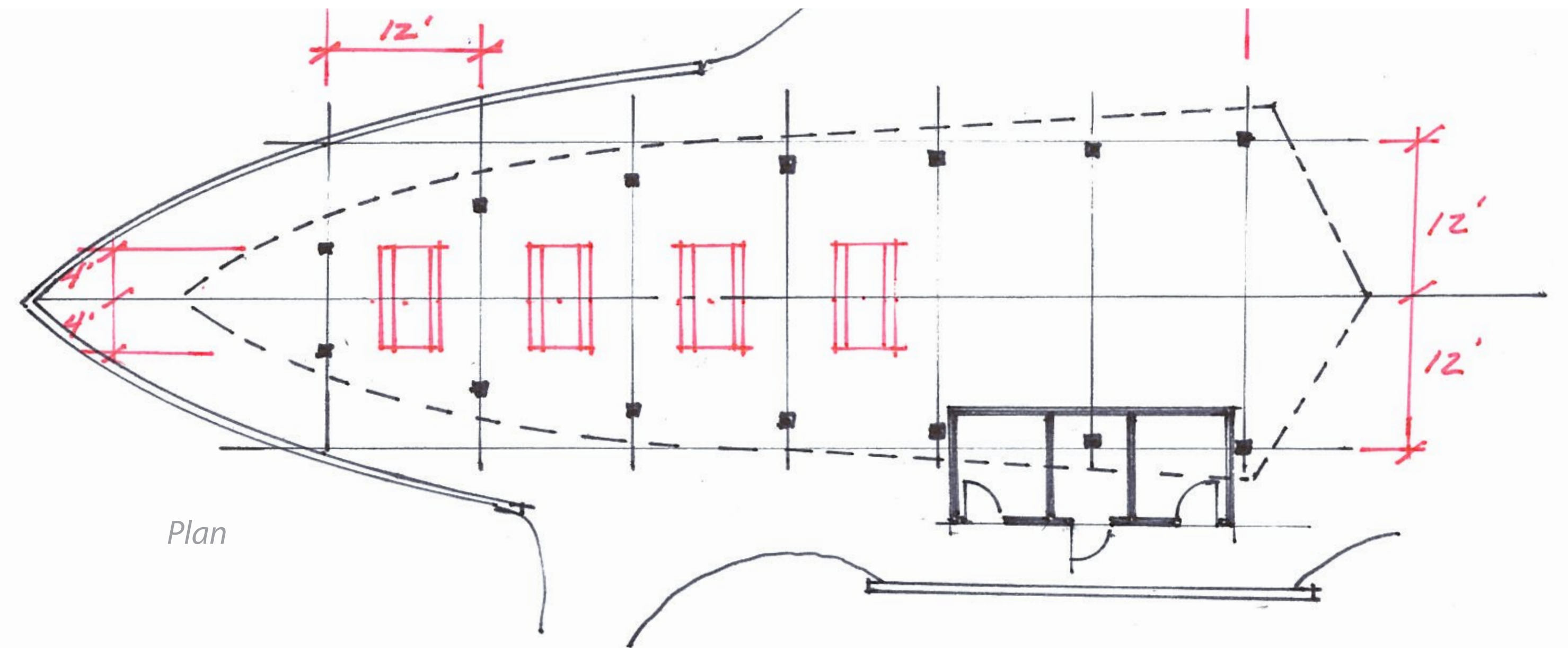
- 1900 SF
- METAL ROOF
- ARCHING ROOF LINE
- 22' AT HIGHEST POINT
- SEATING FOR FOUR 8-PERSON PICNIC TABLES UNDER ROOF
- TWO UNISEX BATHROOMS WITH SMALL STORAGE/MECHANICAL ROOM



Perspective from East (with Primary Gateway Beyond)



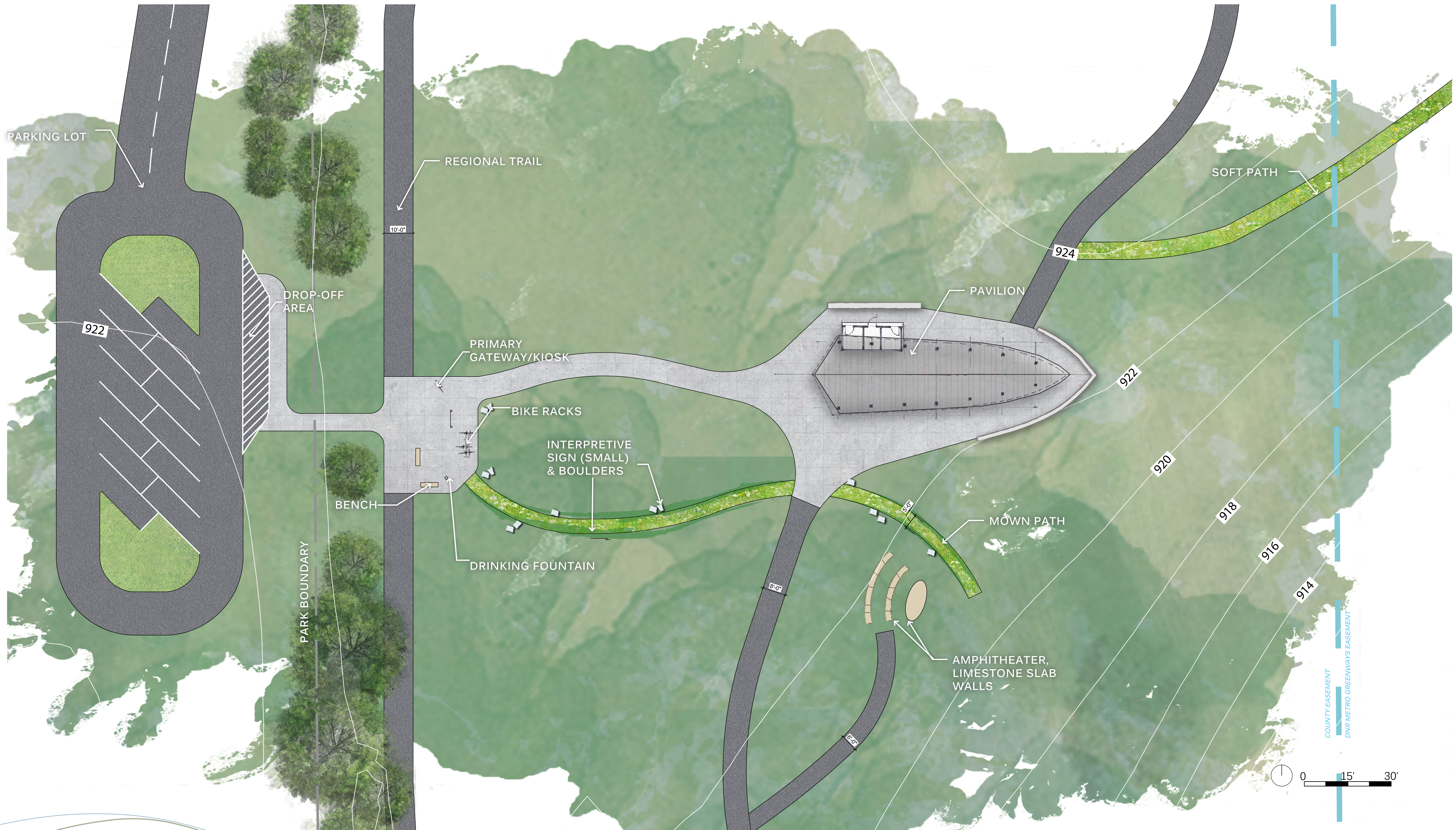
North Elevation



Plan



# LEAF SITE PLAN





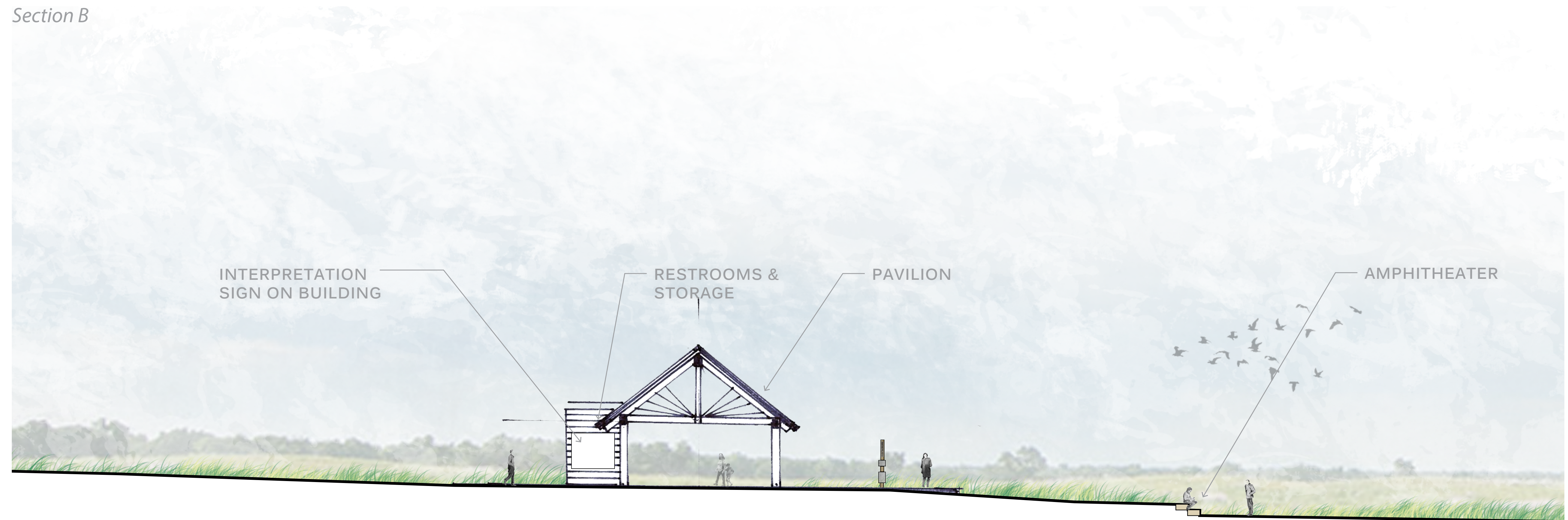
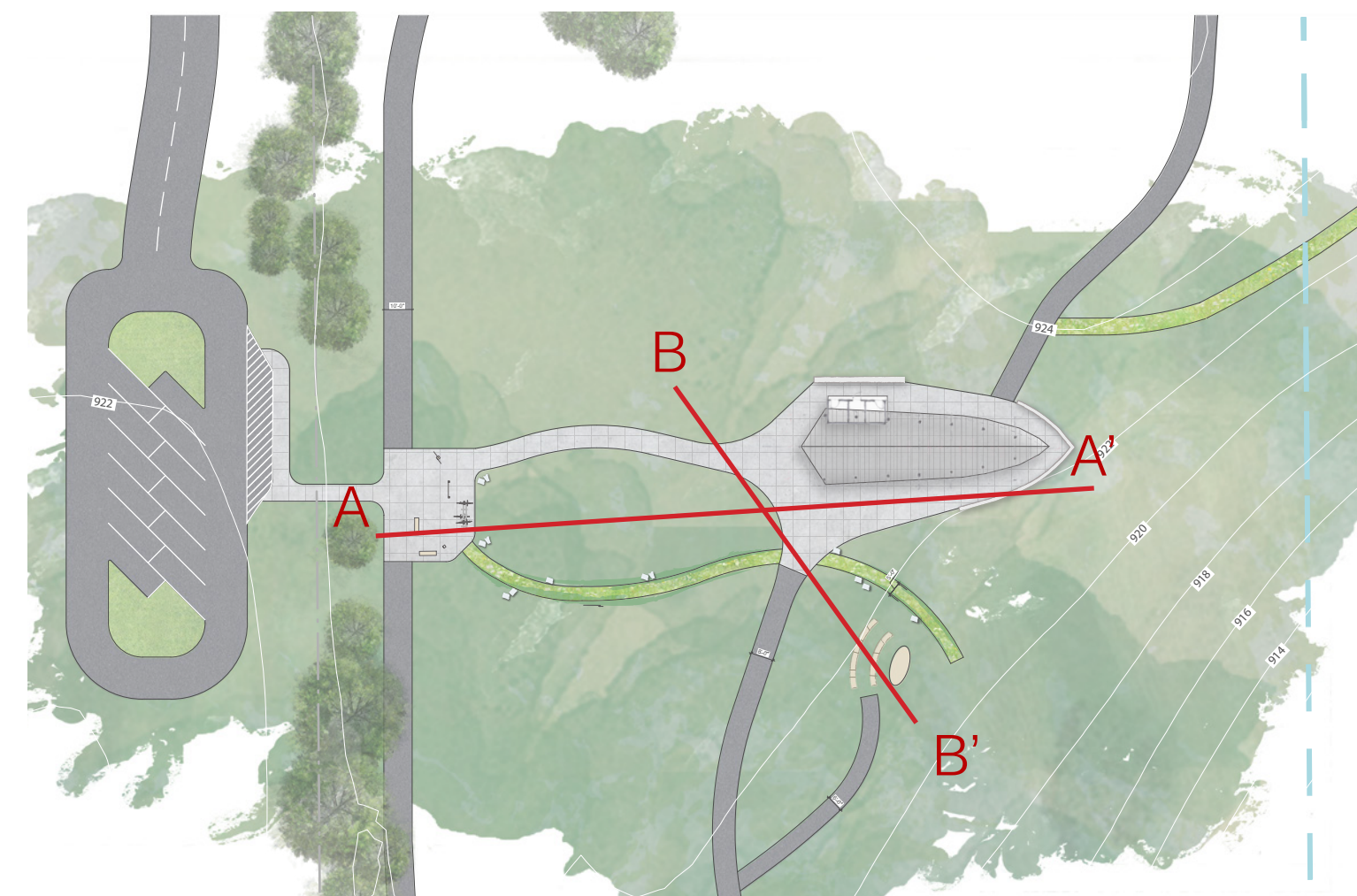
# SITE SECTIONS

Section A



Section B

Site Map





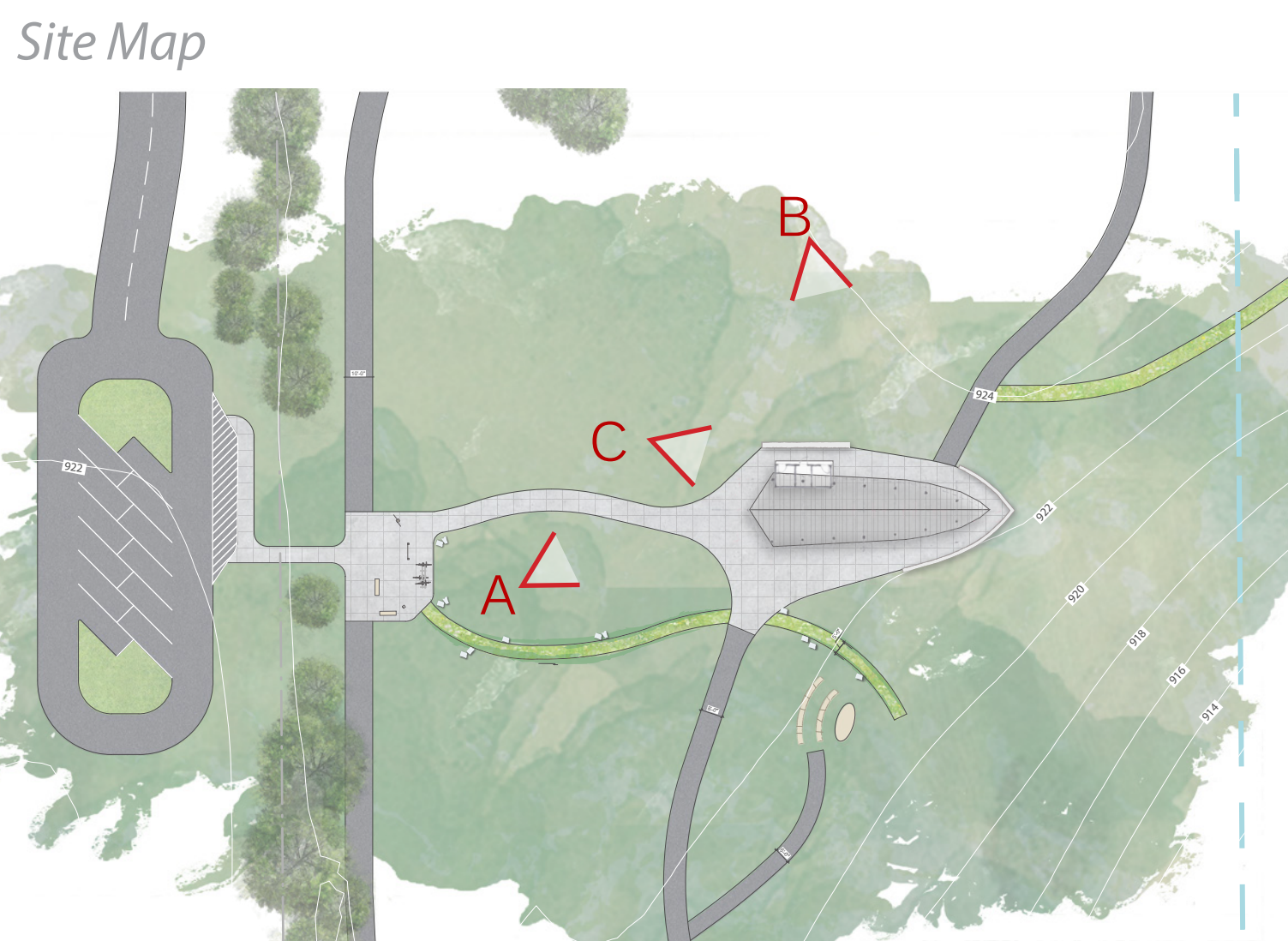
# ELEMENTS IN PERSPECTIVE



Perspective from Primary Gateway (View A)



Perspective from West (View C)



Site Map

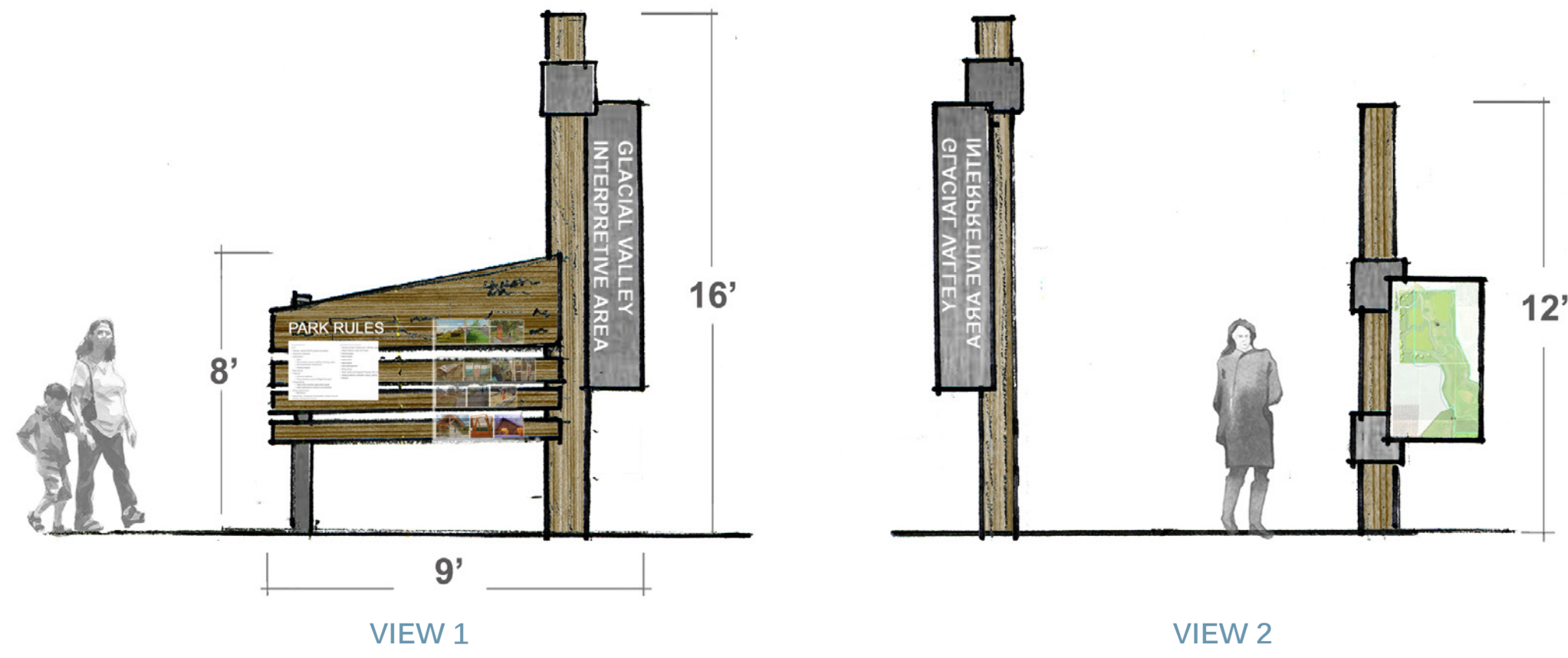


Perspective from Northwest (View B)

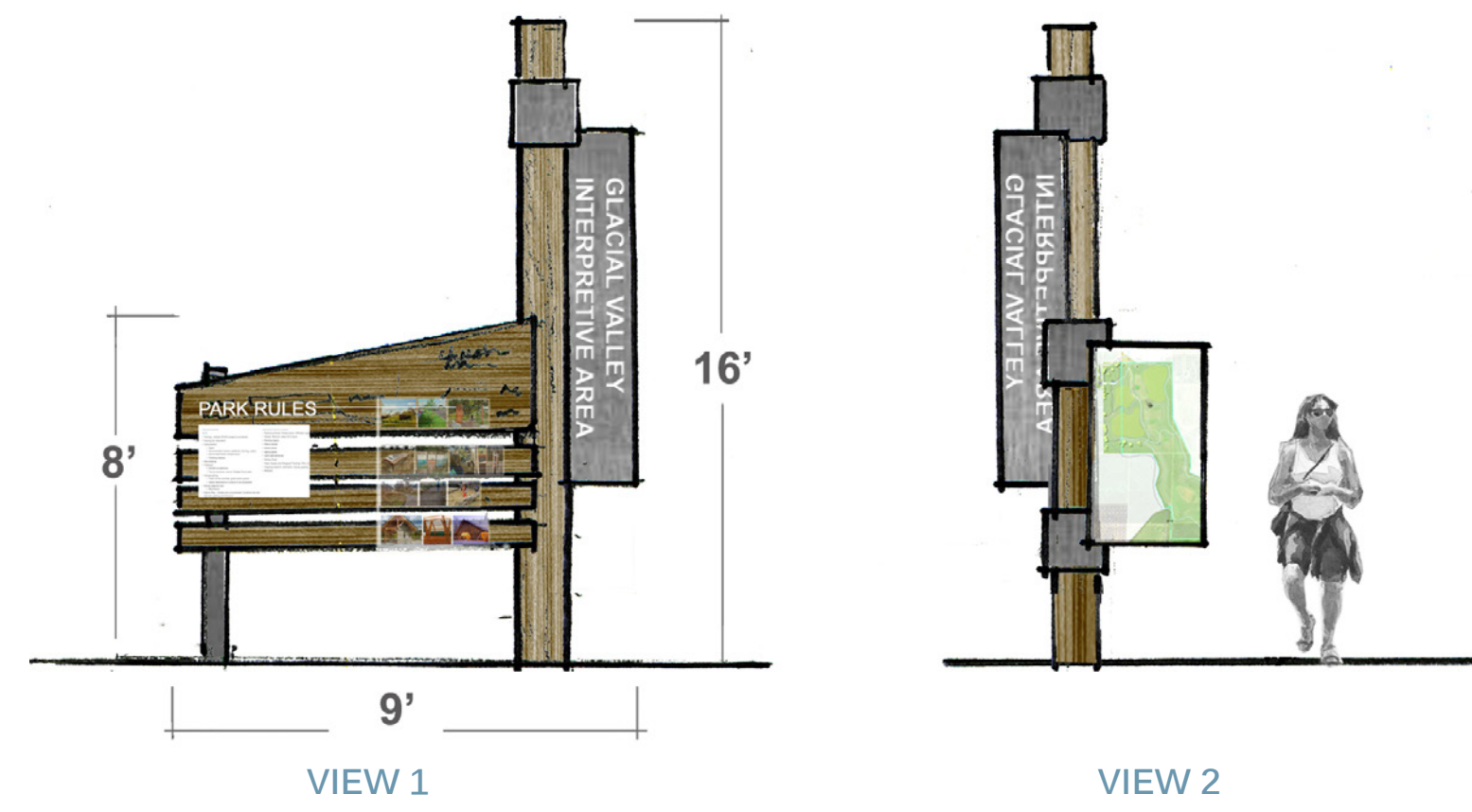


# INTERPRETIVE SIGNS

## PRIMARY GATEWAY WITH LAYERS OF INTERPRATATION

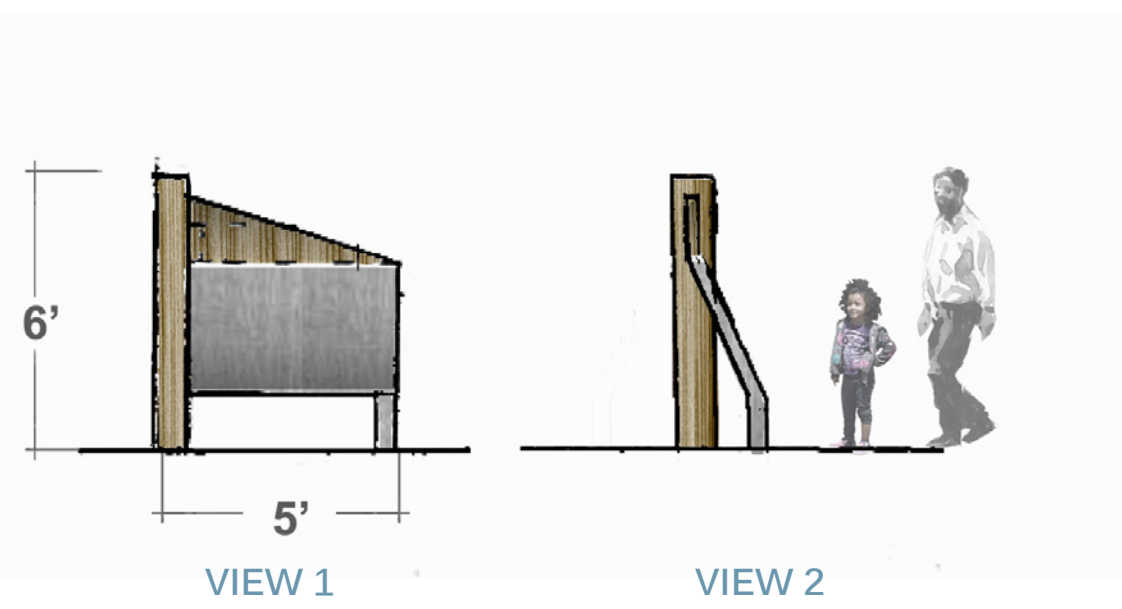


## SECONDARY GATEWAY

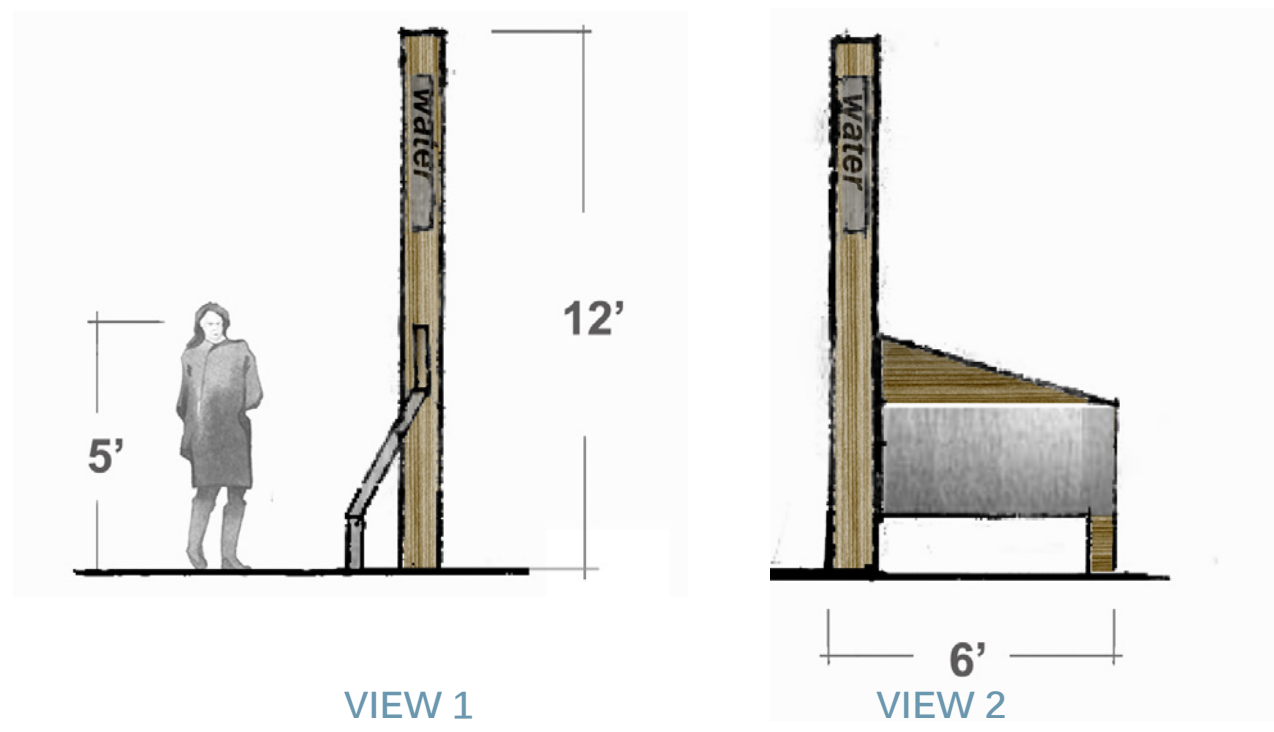


## INTERPRETATION NODE OPTIONS

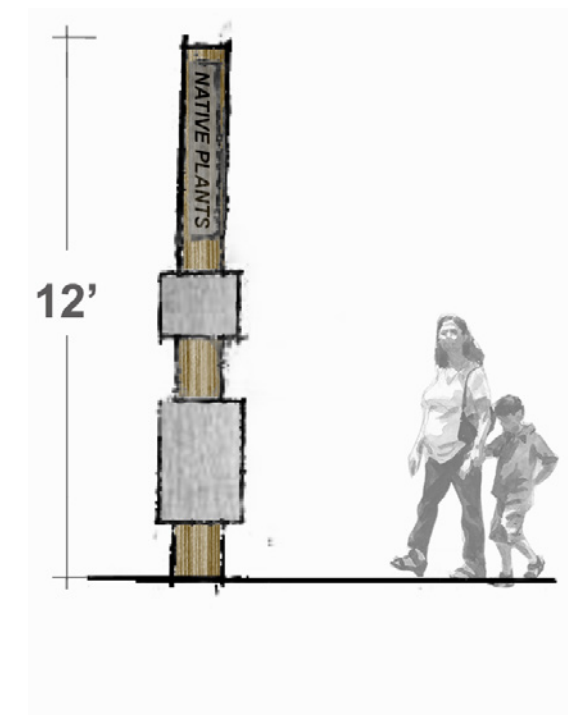
### LOW INTERPRETIVE SIGN



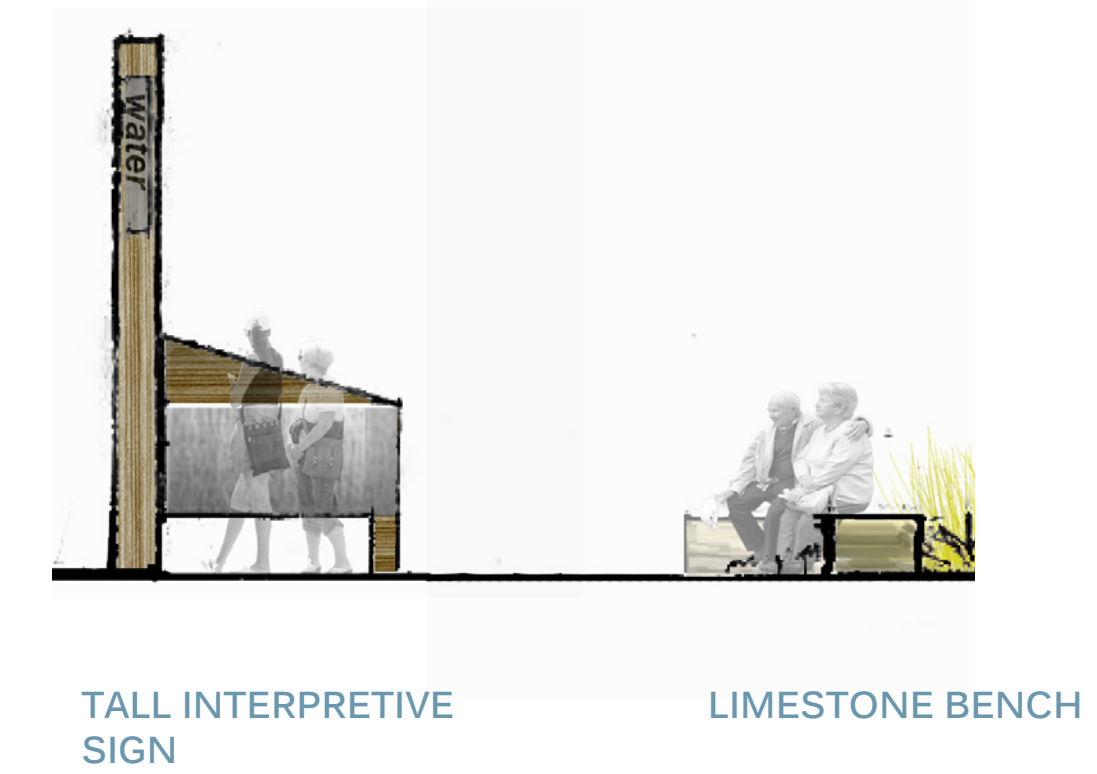
### TALL INTERPRETIVE SIGN



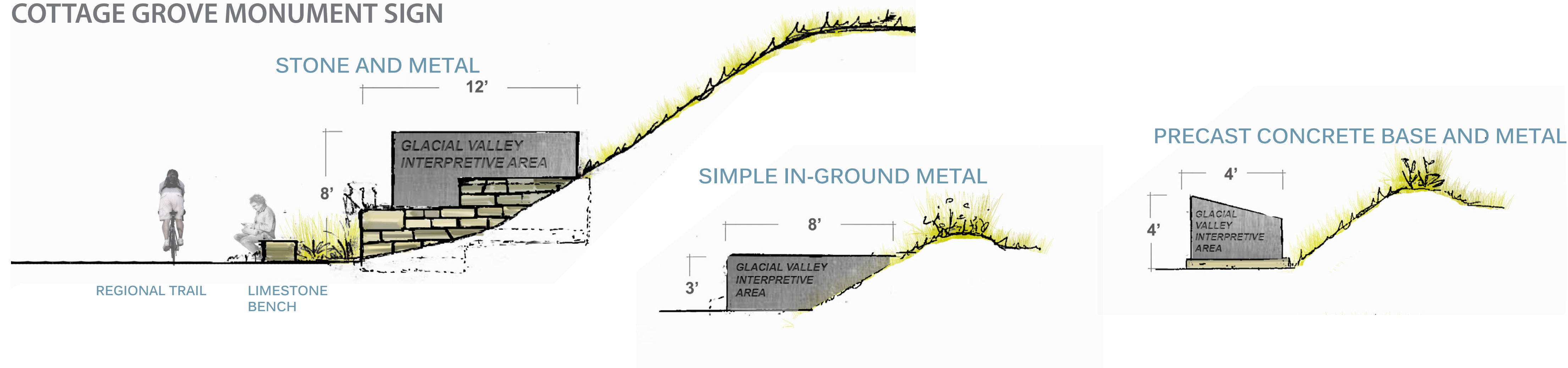
### TERTIARY AND NEIGHBORHOOD



### INTERPRETIVE NODE WITH GATHERING AREA



## COTTAGE GROVE MONUMENT SIGN





# MASTERPLAN

